

MEET OKAEE



Our mission is to support Oklahoma educators and promote, in formal and non-formal settings, environmental literacy through communication, resource sharing, skill building, program sponsorship and recognition of excellence.

The Oklahoma Association for Environmental Education was established in 1993 and is the state affiliate of the North American Association for Environmental Education (NAAEE). OKAEE brings together a variety of environmental educators who share a common goal – excellence in environmental education. OKAEE serves educators of all grade levels, natural resource professionals, students, university faculty, environmental clubs, non-profit educational programs, and corporate environmental interests. OKAEE unites these diverse interests in a forum designed to energize and inspire participants to greater levels of achievement.

OKAEE accomplishes many of its goals by hosting a one-day conference, the Oklahoma Environmental Education Expo (EE Expo). The first EE Expo was held in February 1996, and 2025 marks the 26th EE Expo.

The activities and day-to-day operations of OKAEE are organized and carried out by a eight-member Board of Directors. Board members are all volunteers. As in most not-forprofit organizations, OKAEE is constantly seeking new board members. We would love for you to join us.

For more information about OKAEE, please contact us at support@okae.com

BOARD OF DIRECTORS



Tony Pascall - Board President
Education Coordinator, Oklahoma Forestry Services, Oklahoma City



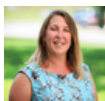
Emily Garman - Secretary
Garden Coordinator, Terra Verde Discovery School, Norman



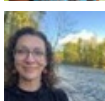
Sara Ivey - Treasurer
Education Coordinator for the OK Department of Environmental Quality, Oklahoma City



Galea Albano - Board Member
Former Recycling Outreach Coordinator, City of Broken Arrow, Broken Arrow



Dr. Nicole Colston - Board Member
Teaching Assistant Professor, Honors College, Oklahoma State University, Stillwater



Amelia Cook - Board Member
Sustainability Science Manager & Tribal Liaison, South Central Climate Adaptation Center, Norman



Abby Randall - Board Member
Co-Executive Director, EcoRise, Oklahoma City



Dr. Laura Wilhelm - Board member
Vice President of Professional Learning, Kaplan Early Learning Company, Edmond

26TH ANNUAL OKLAHOMA ENVIRONMENTAL EDUCATION EXPO

EXPO AGENDA

- 8:00AM - Registration and Exhibits Opens
- 8:30AM - Welcome by OKC Zoo Animal Ambassadors
- 9:00AM - Keynote Panel Presentation - "**Cultivating Communit(EE)**"
- 10:15AM - Break - Visit Exhibitors
- 10:30AM - Concurrent Session I
- 11:30AM - Break - Visit Exhibitors
- 11:45AM - Lunch & Networking
- 12:45PM - Break - Visit Exhibitors
- 1:00PM - Concurrent Session II
- 2:00PM - Break - Last chance to Visit Exhibitors
- 2:15PM - World Cafe
- 3:30PM - Closing Remarks, Door Prizes
- 3:45PM - Happy Hour

KEYNOTE PANEL – CULTIVATING COMMUNIT(EE)



Travis Andrews is the Executive Director at Native Farming Solutions and Garden Program Manager for Skyline Urban Ministry. He is spreading traditional ecological knowledge in Central Oklahoma and beyond, teaching people of all ages about organic waste diversion, soil biology, making your own compost for your farm or garden, and preserving American Indian seeds and cultivation techniques.



Elizabeth Callicoat is a Teacher and Coordinator of the Durant Green School Program. Operating within the Durant Independent School District, the program directly empowers students and teachers to 'green' their school. The program also serves as a bridge to the community by building collaborative projects and connections. Hundreds of students have participated in the Durant Green School Program, which includes elective classes and green team membership opportunities at Durant Intermediate School, Durant Middle School, and Durant High School.



Natalie Evans is the Program and Marketing Director for OKC Beautiful. She's their trees, trash, parks, and community events gal. Whether organizing a festival, teaching a class, planting trees, or picking up trash, her work is centered around bringing the community together to help create a more beautiful and sustainable Oklahoma City.



Abby Randall is a visionary leader in the green schools movement with a passion for deeply embedding sustainability and climate justice education into every facet of school systems. She taught secondary science in the Austin Independent School District and has more than 15 years of experience designing and facilitating educational programs for a wide variety of K-12 science courses and alternative education programs across the U.S. In her role as Co-Executive Director of EcoRise, Abby oversees programs, people and culture, and technology teams.

CONCURRENT SESSION I (10:30-11:30 AM)

Title	Summary	Presenter	Organization	Grade Level	Room
Code, Create, Conserve: Empowering Native Students with FIIRE	Join us for an engaging hands-on session exploring FIIRE, a coding and robotics program using micro:bit technology while fostering climate action awareness among Native middle school students.	Cheyenne Skye Branscum	American Indian Science and Engineering Society (AISES)	Secondary (Middle School)	Auditorium
Environmental Justice Heroes: Inspiring Change Through Stories of Impact and Action	Explore stories of environmental justice heroes and gain tools to inspire students with lessons on equity, sustainability, and activism	T Larson	EcoRise	Elementary (K-5th Grade), Secondary (Middle and High School)	Classroom 1
Using Citizen Science for Education	This workshop will demonstrate scistarter.org as a resource for building citizen science into class curriculum, with modifications for all ages.	Cheyenne Olson	Northeastern State University	Secondary (Middle and High School) Higher Ed	Classroom 2
STEM-based Activities for Young Ecologists	Create 3-D models, engage in an interactive story and other fun activities to help students understand human-environmental connections and paths toward a healthy planet.	Erin Casey	University of Oklahoma	Elementary (K-5th Grade)	Classroom 3
Discovering Journey 2050	Join Oklahoma Ag in the Classroom as we explore the Journey 2050 program created by Nutrien. The program contains lesson plans and an interactive game that teaches students about sustainable agriculture, soil health, water, economy, land use, careers, and technology.	Emily Ague	Oklahoma Ag in the Classroom	Secondary (Middle and High School)	Classroom 4
Making Inclusion Second Nature- Universal Design for Learning Principles in Environmental Education	Learn to apply Universal Design for Learning (UDL) principles in environmental education through interactive strategies that promote inclusivity, engagement, and accessibility for all learners.	Tony Pascall	Oklahoma Forestry Services	Non Formal Educators	Discovery Theater
Roots of Reflection: Nature Journaling for Environmental Learning	Explore how nature journaling fosters learning through techniques like, Soundscape Maps and Ask Questions & Think like a Scientist. Inspire curiosity and deepen connections with nature.	Rachelle Johnson & Amber L. Smith	K20 Center, University of Oklahoma	Elementary (K-5th Grade), Secondary (Middle and High School)	Tree House
Loose Parts Play Break	Stop by for some open-ended environmentally-inspired creative free play! Set your inner-artist free with natural objects: wood, seashells, sticks and pinecones and ordinary magical household materials: spoons, flashlights & shadow-makers, buttons & beads. Take a photo of your creation, then upcycle the parts into something altogether different! Before you go, add to our chart of ideas to adapt this concept into your own setting.	Dr. Laura Wilhelm	Kaplan Early Learning Company	Early Childhood	Back Patio

CONCURRENT SESSION II (1:00-2:00 PM)

Title	Summary	Presenter	Organization	Grade Level	Room
OKC Living Classroom Grant Program	Discover OKC's Living Classroom Grant for pollinator gardens and learn how to apply its principles to enhance your own classroom environment.	Rachael Robinson & Toni Dickson	Oklahoma City Zoo	Elementary (K-5th Grade)	Auditorium
Inspiring Student Action: Student-led Community Responses to Environmental Concerns	What actions can students take for healthier environments in their communities? Attendees will view successful student-led, Oklahoma-based projects and envision projects relevant to their communities.	Rebecca Jim & M. Bailey Stephenson	Local Environmental Action Demanded (LEAD Agency)	Secondary (Middle and High School)	Classroom 1
Quick-Start Guide for School Gardens	Many school teachers are excited about starting a school garden, but don't know where to start, how to integrate it into the classroom, or how to get past the typical obstacles of location, expense, and lack of expertise or support. We will be discussing the very basic principles you need to know to get a successful start to school gardening.	Shelley Mitchell	Oklahoma State University	Early Childhood, Elementary, Secondary (Middle School & High School)	Classroom 2
Inceptive Interpretation	Inceptive Interpretation describes basic interpretive methods and techniques that can help create programs/lessons for all educators followed by an interactive activity that models interpretive techniques.	Torie Thompson	Oklahoma State Parks	Non Formal	Classroom 3
Carbon Capture - A Crash Course for Environmental Educators	Can we put CO2 in the air back underground? Explore Carbon Capture and Storage in Oklahoma and leave equipped to inform your classroom and community.	Carrie Miller-DeBoer & Molly Yunker	Oklahoma Geological Survey	Secondary (Middle and High School)	Classroom 4
Community Perspectives: Engaging Climate Change Through PhotoVoice	Using PhotoVoice, teachers and students can engage in conversations about climate change, exploring local weather and climate impacts while fostering science inquiry and emotional connections.	Emma Kuster & Amelia Cook	South Central Climate Adaptation Science Center	Elementary (K-5th Grade), Secondary (Middle and High School)	Discovery Theater
Building a Field-Based Secondary Science Course: Learning and Reflections	The development and overview of a new high school level course, Ecosystems of Northeastern Oklahoma.	Jennifer Miller & Alexis Smith	Tulsa Public Schools	Secondary (High School)	Tree House
Loose Parts Play Break	Stop by for some open-ended environmentally-inspired creative free play! Set your inner-artist free with natural objects: wood, seashells, sticks and pinecones and ordinary magical household materials: spoons, flashlights & shadow-makers, buttons & beads. Take a photo of your creation, then upcycle the parts into something altogether different! Before you go, add to our chart of ideas to adapt this concept into your own setting.	Dr. Laura Wilhelm	Kaplan Early Learning Company	Early Childhood	Back Patio

WORLD CAFÉ (2:15-3:15 PM)

The World Café is an interactive session designed to foster meaningful conversations around key themes and questions.

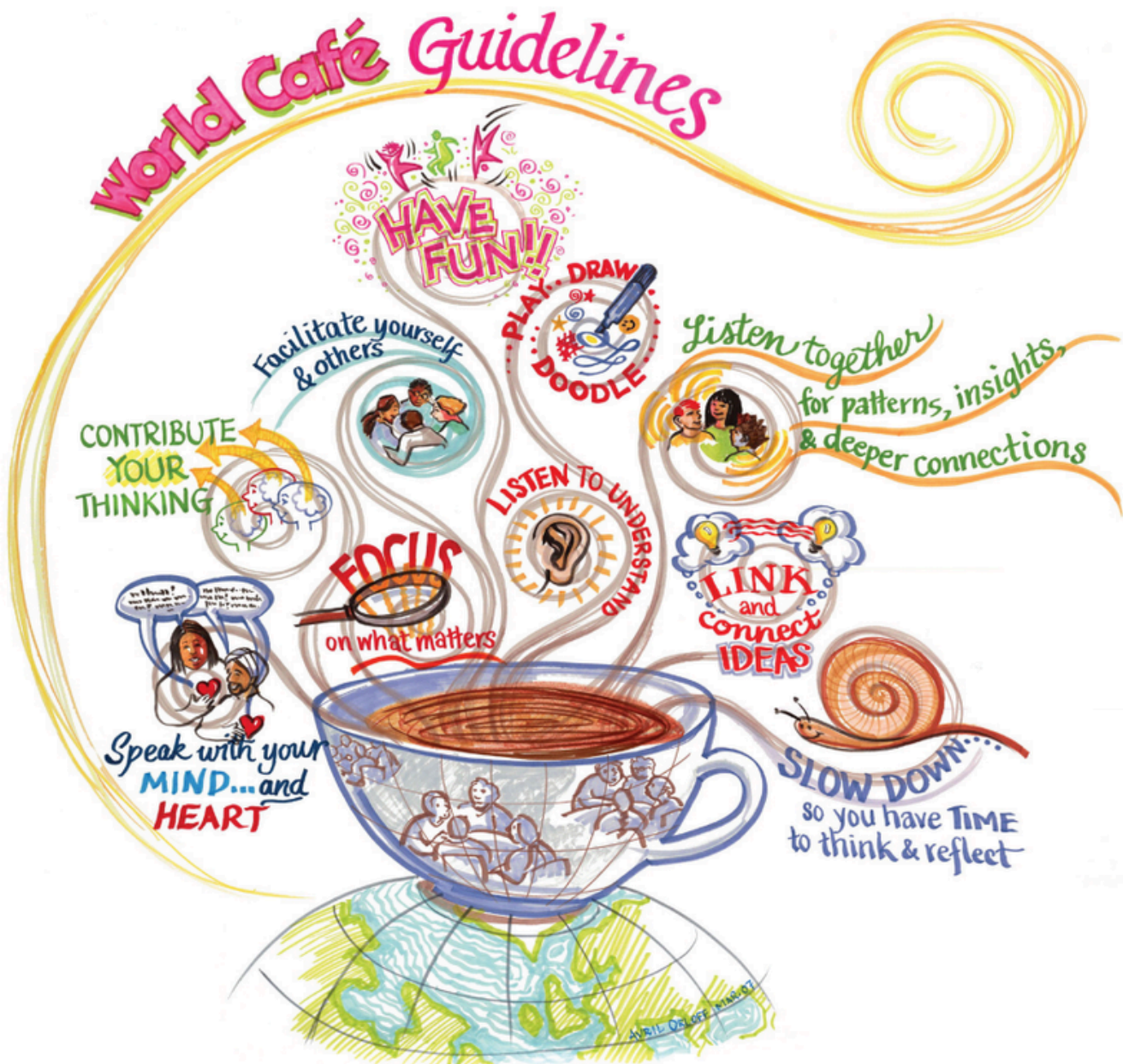
Participants rotate among small group discussions, sharing ideas and insights to generate collective wisdom.

This is a opportunity to explore diverse perspectives, identify common ground, and spark innovative thinking in a collaborative environment.

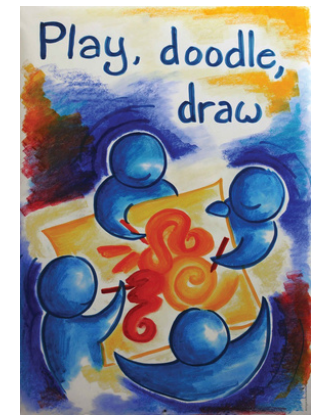
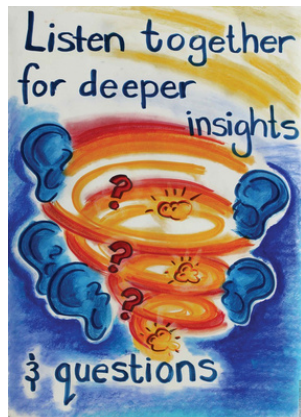
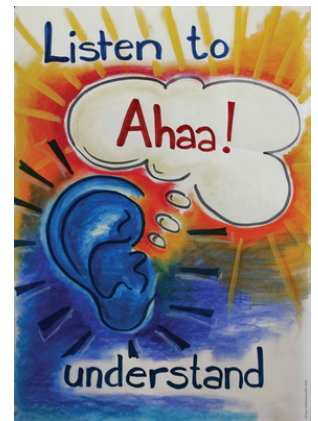
Session Objectives:

- Encourage open, inclusive dialogue to explore shared interests and challenges.
- Generate actionable ideas and identify opportunities for collaboration.
- Create a shared understanding of key topics through collective knowledge.

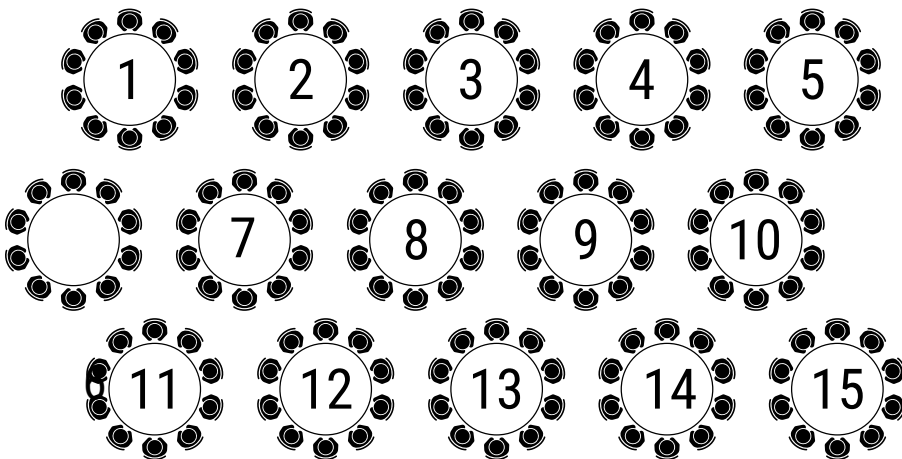
Each participant will rotate through three different topics during the session, with each rotation lasting 20 minutes. So start thinking about the three topics you'd like to explore.



WORLD CAFÉ ETIQUETTE



Map of World Cafe Tables in the Canopy Restaurant



World Cafe Topics

1. Artificial Intelligence
2. School Gardens
3. Pollinators
4. Environmental Learning in Urban Spaces
5. Outdoor Classrooms
6. Environmental Justice
7. Food Sovereignty
8. Climate Education
9. GenThrive - Mapping EE in Oklahoma
10. Future of OKAEE
11. Citizen Science
12. Eco Art/Creativity
13. Biodiversity
14. Evaluating Programs
15. Grants/Funding for Environmental Ed

This program utilizes the World Café method, originally developed by the World Café Community Foundation. We acknowledge the Foundation as the source of the World Café name and methodology.

For more information, please visit: <https://www.theworldcafe.com>.

This work is licensed under the Creative Commons Attribution 4.0 International License.

To view the full license, visit: <https://creativecommons.org/licenses/by/4.0/deed.en>.

No changes were made to the original method.

Disclaimer: The use of the World Café method in this program does not imply endorsement by the World Café Community Foundation.

ENVIRONMENTAL EDUCATION EXPO COMMITTEE

- Galea Albano
- Nicole Colston
- Amelia Cook
- Tom Creider

- Emily Garman
- Jack Hilgert
- Sara Ivey
- T Larson

- Cheyanne Olson
- Tony Pascall
- Joe Rackley
- Abby Randall

- Caroline Vesper
- Laura Wilhelm
- Charlotte Wood Wilson

Join the OKAEE Environmental Education Expo Committee!

The OKAEE Environmental Education Expo Committee plans and hosts our annual event, bringing together educators, advocates, and community members passionate about environmental education. We welcome anyone interested in serving on the committee—new ideas and fresh perspectives help make our event even better!

If you're interested in joining or learning more, please contact Sara Ivey at sara.ivey@deq.ok.gov.

We'd love to have you on the committee!

2025 Oklahoma Environmental Education Expo

“Cultivating Communit(EE)”



THANK YOU SPONSORS!



ABOUT THE PROGRAM

The KOB Litter Education Program provides opportunities for Oklahoma students to create projects that teach them about the harmful effects of littering and the importance of reducing, reusing, and recycling! All of KOB's Litter Education programming is **free, low-hassle, beneficial** for students, and **important** for Oklahoma. Programming is offered to educational institutions, after-school programs, scout troops, and more!

Finalists of each contests are selected by expert judges and public input! Winners are honored at the KOB **Student Environmental Champions Awards!**

OUR CONTESTS

We have four unique contests to target different age groups.



The **UnCapped** Contest — Elementary student groups and classes create a work of art from plastic bottle and container caps, and write an essay describing why it is important to recycle and the harmful effects of littering.

The **UpCycled** Contest — Middle school students work together to design and create functional items from upcycled materials, and a class-collaborative essay discussing the intended use of their creation, the negative impact of landfills, and the advantages of reusing items.



The **End Litter** Contest — High school and college students compete for a \$1,200 cash scholarship by creating a short PSA video on the dangers of litter and illegal dumping in Oklahoma. Students are asked to present relevant statistics on the harmful effects on the environment and the costs to the state in an essay.

The **GACinOk T-Shirt Design** Contest — Oklahoma K-12 students are invited to create a design for the shirts given out to more than 10,000 amazing volunteers across the state who participate in the Great American Cleanup! The Great American Cleanup is the nation's largest litter remediation effort.



MORE RESOURCES

KOB offers several online resources including downloadable activities. Scan below to learn more:



NEED HELP RECYCLING?

Check out KOB's Lend-A-Bin program to learn more about how KOB can help you achieve your recycling goals!



THANK YOU SPONSORS!



Recycle with Intent.

Welcome to the Community Recycling Unit

The Community Recycling Unit is a free, self-service drop-off container for your recyclables, available at select Walmart and Sam's Club locations.



What Can Be Recycled?

The Community Recycling Unit accepts six different waste streams including:



PET

Plastic Bottles



PET

Clear Plastic Containers



HDPE

Home Cleaning & Beauty Bottles



LDPE

Plastic Bags & Films



PP

Rigid Food Packaging



ALU

Aluminum

Help Us Reduce Waste, Recycle More and Reuse Materials.

For more information,
please visit 

Walmart



Sam's Club



*DISCLAIMER: Recycling and reuse of materials is not guaranteed. Eligible materials are recycled to the maximum extent practicable. Hazardous waste and contaminated materials will not be recycled or reused.

For more information about D6, please visit us at [D6inc.com](https://www.D6inc.com)

BREAKFAST SPONSOR



EXHIBITORS



HAPPY HOUR SPONSORS



THANK YOU FOR ATTENDING THE 2025 Oklahoma Environmental Education Expo “Cultivating Communit(EE)”



We Value Your Feedback!
Please take a moment to complete our event survey.
Your input helps us improve future events.
If you would like a Certificate of Attendance,
you can request one through the survey.
Thank you for your participation!



Post Expo Survey